

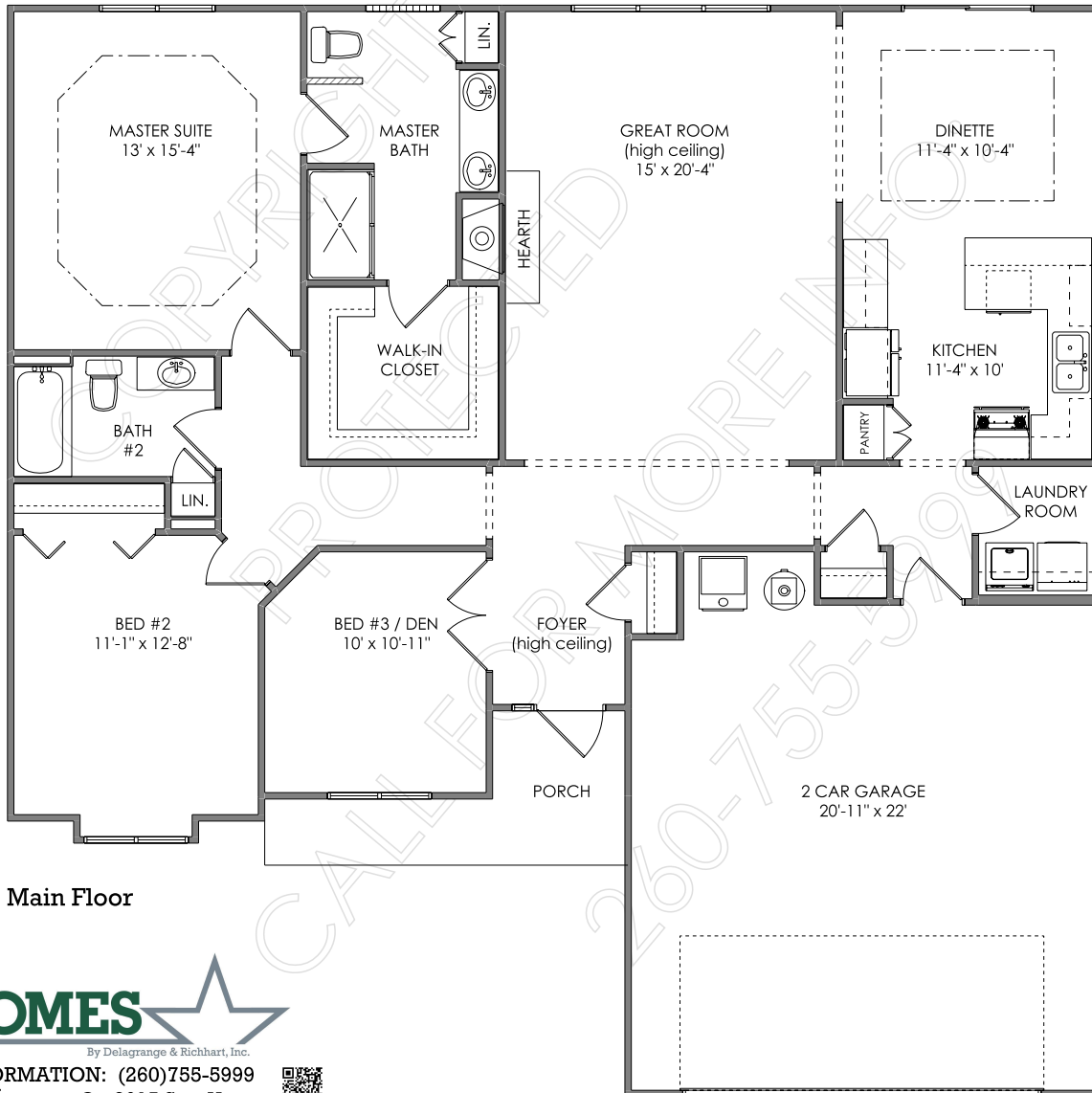
# Peaceful Port



Living Area = 1,572 sq. ft.  
Garage = 488 sq. ft.  
Total = 2,060 sq. ft.



Front Elevation\*



Main Floor



FOR MORE INFORMATION: (260)755-5999  
[www.starhomesinc.com](http://www.starhomesinc.com) © - 2015 Star Homes



This design is copyright protected. Any unauthorized use in whole or part is an infringement of copyright laws. \*Some features portrayed in illustrations are not included in base price. All dimensions are approximate. Floor plans, specifications, & price are subject to change without notice. Final floor plans & elevations may vary.